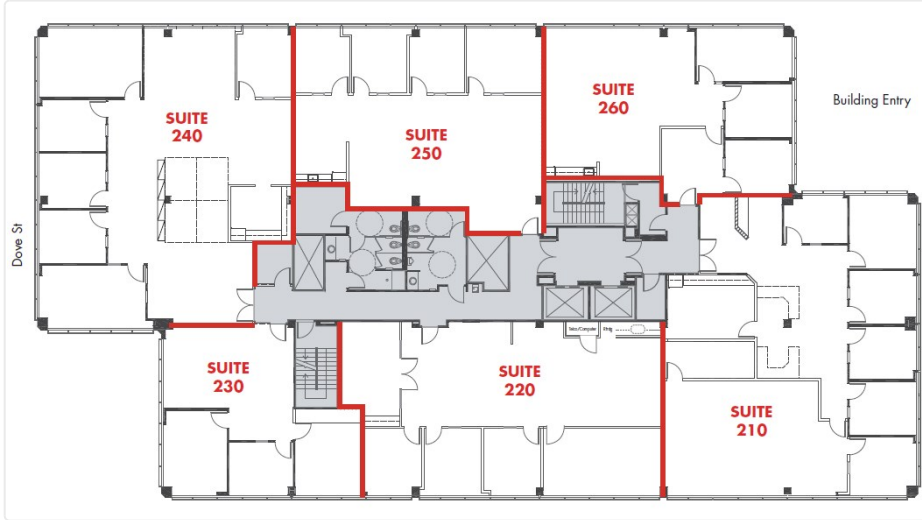


# 1401 & 1375 Dove

1401 Dove St

250 | Size - 1,880 SF



## COMMENTS

Right off of Elevator Lobby with easy access  
Four (4) Window offices - one being larger executive office  
Large open area for cubical furniture  
Kitchenette area with sink.  
Move-in Ready. Call to Show

Asking Rate	TBD FSG
Min SF	1,880
Max SF	1,880
Available Date	Now

## CONTACT DETAILS

Leasing  
Oliver Fleener  
Senior Vice President  
(949) 484-9068  
oliver.fleener@avisonyoung.com  
Avison Young  
3 Park Plaza, Suite 450, Irvine, CA 92614  
Lic 01245596

Property Management  
Aleksandra Prifti  
Real Estate Manager  
(949) 955-2131  
aleksandra.prifti@cbre.com  
CBRE  
4400 Macarthur Blvd., Suite 350, Newport Beach, CA 92660  
Lic 02108726

# Photos

---

