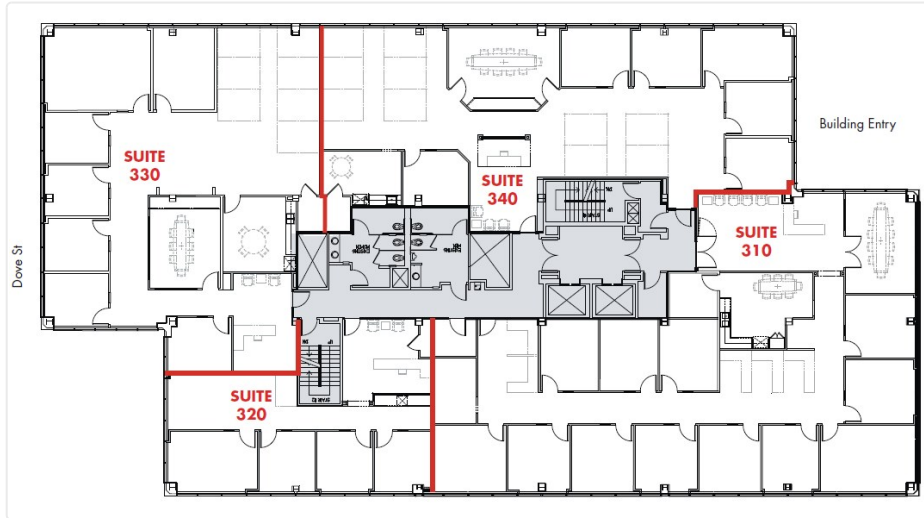


1401 & 1375 Dove

1401 Dove St
310-320 | Size - 5,941 SF



COMMENTS

Must Call to Show
Current Law firm Space
Multiple Window Offices, Kitchen, Reception areas, conference rooms
Will be move-in ready when vacant
Can combine 310-320 (5,941 SF); 320-330 (4,924); 310,320,330 (9,448 SF); 3rd Floor (12,809 SF)

Asking Rate	TBD FSG
Min SF	5,941
Max SF	12,809
Available Date	8/1/2025

CONTACT DETAILS

Leasing
Oliver Fleener
Senior Vice President
(949) 484-9068
oliver.fleener@avisonyoung.com
Avison Young
1 Park Plaza, Suite 100, Irvine, CA 92614
Lic 01245596

Property Management
Aleksandra Prifti
Real Estate Manager
(949) 955-2131
aleksandra.prifti@cbre.com
CBRE
4400 Macarthur Blvd., Suite 350, Newport Beach, CA 92660
Lic 02108726